



2014-2015 ANNUAL REPORT

CSDGKC MISSION

The mission of the Cooperating School Districts of Greater Kansas City is to leverage our members' combined strengths to provide high-quality and cost-effective services and resources to maximize learning for all students.

Cooperating School Districts of Greater Kansas City

Financial impact of school districts continues to grow, according to Annual Economic Impact Study

The results from the third year of the Economic Impact Study are in, and they continue to affirm the positive financial effect that school districts have on their local communities.

Participation in this year's survey was up over previous years, with 41 school districts in 14 counties (10 in Missouri and 4 in Kansas) taking part, representing close to 300,000 students and more than 13,000 three- to five-year-old children in preschool programs.

The results show that more than \$2.7 billion was added to the local economy last year through the school districts represented in the survey. Specifically:



BUDGET

The participating school districts contributed more than \$2.1 billion in payroll and health-related benefits for their employees, plus an additional \$144 million coming from the sale of close to 59 million meals (breakfast and lunch).

SERVICES

School districts in the survey maintain more than 13,500 acres, and clean and maintain more than 60 million square feet within their buildings each day. They travel more than 31 million miles a year, transporting students to and from school.



FACILITY INVESTMENTS

During the survey period, the school districts that participated in the study spent more than \$311 million on construction and renovation projects, and an additional \$90 million on technology-related initiatives.

In addition, more than \$393 million was paid out in benefits through PSRS/PEERS last year to individuals in the 10 Missouri counties represented in the study. At least a portion of these funds are returned to the local community by the recipients through taxes and purchases.

The complete study details are available from CSDGKC for school districts that would like to have this information available for their own materials, or for use in presentations.



Legislative Platform focused on funding, student transfers

Assisted by long-term consultants Tom Rackers and Steve Carroll, CSDGKC's legislative platform is advancing positions primarily in two areas.



First is advocating for fully funding the Formula, to protect the integrity of funding in both Formula districts and Hold Harmless districts.

Second is the ongoing issue of student transfers. CSDGKC's position is that all means possible should be brought to bear to assist unaccredited school districts, because it is best for both the students and the affected districts, and because it avoids the disruption caused by transfers.

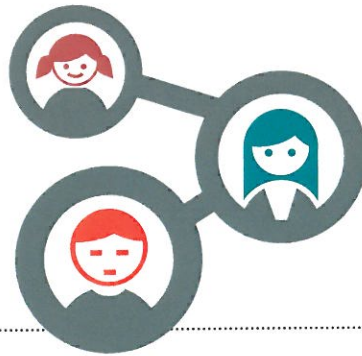
New name, even more benefits: SiPGKC

This year saw two changes – one small, and one significant – for the entity that was created, as CSDSIP, to help school districts offer better health benefit programs while also increasing cost-efficiency.

First, the organization changed its name to the Self-Insurance Pool of Greater Kansas City, or SiPGKC. This new name puts the benefit – the self-insurance pool – front and center, rather than the CSD name.

Second, SiPGKC added dental coverage to its portfolio of benefits, bringing an important (and much sought-after) offering to its member districts to help them maintain a healthy workforce.

SiPGKC offers eligibility to employees, spouses, dependents and retirees of districts that are members. By combining employee numbers, member districts gain an advantage in negotiating a plan that is just right for their organization – whether that plan is with SiPGKC, or the leverage gained through membership stimulates a lower rate from their present carrier.



Current member districts are Blue Springs, Grain Valley, Lone Jack and Smithville. The Hickman Mills School District will be joining in 2015-16. For information about SiPGKC and its total package of benefits, contact Paul Shrout, Director of Business Services, at pshrout@cstdgkc.org.

Education Policy Fellowship Program expanding understanding of the policy process

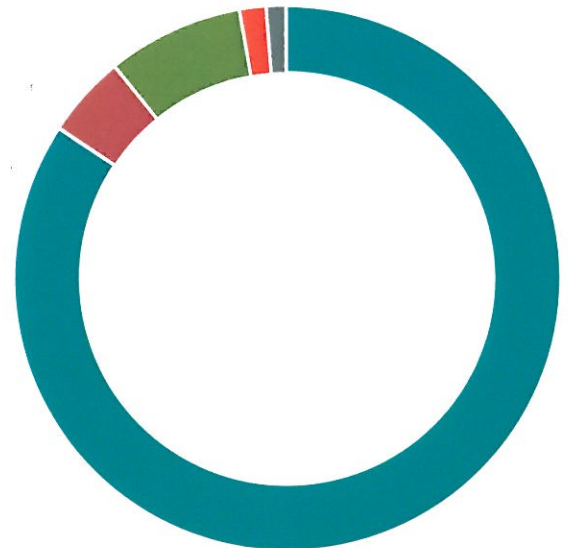
Eleven educational leaders from a variety of settings are currently engaged in a far-reaching program that demystifies the policy process so that program participants are better prepared to play a role in its development. The program is a joint effort of the Education Policy Fellowship Program (EPFP), CSDGKC and the Local Investment Commission (LINC). Dr. Robert Bartman is the Project Director.

The monthly meetings touch on a variety of policy-related topics, and participants come out of each session with homework, designed to hone their skills and understanding. The curriculum also includes an April trip to Washington, D.C. to participate in a Policy Seminar.



In June, the participants will present their final projects and will graduate, achieving status as an Education Policy Fellow.

Revenues 2014-15 through 3/31/15



- Membership Dues
- Associate/Affiliate Membership Dues
- SIPGKC
- Purchasing Program
- Rebates/Administrative Service Fees

PDN membership now stands at 49

The Professional Development Network, or PDN, increased its membership to 49 this year, with participants learning from local, regional and national luminaries.

More than 1,000 participants to date have benefited from presentations by Cris Tovani, Dan Meyer, Vicki Gibson, Tim Shanahan, John Kuglin, Ellin Keene, Debbie Miller, Doug Fisher and Greg Tang.

PDN program participants have raved about the curriculum and presenters. A sample of their feedback is as follows:

"What I found most useful about today's workshop was the discussion and learning from others."

"This was, by far, the most helpful PD that I have gone to. I am excited to get into my classroom and begin asking more interesting questions to the students."

"I enjoyed getting to take a day to learn and reflect on my teaching. It's hard to reflect when you're constantly moving, and teaching, and surviving."

In addition, the PDN is working with five districts – North Kansas City, Kansas City, Independence, Blue Springs and Platte County – to develop four lab classrooms per district. These classrooms will identify best practices in literacy, and their findings will benefit both large and small school districts.

CSDGKC Maintains Fiscal Stability

Actual Revenues vs. Expenditures 2009-10 thru 2014-15



*2009-2010 revenues are lower than actual because several districts paid their 2009-2010 membership dues in 2008-2009



**CSDGKC 2014-2015
BOARD OF DIRECTORS**

Dr. Andrew Underwood

*CSDGKC Board President
Superintendent
Belton School District*

Mr. Joe Nastasi

*CSDGKC Board Vice President
Board President
Center School District*

Dr. Bill Nicely

*CSDGKC Board President-Elect
Superintendent
Kearney School District*

Dr. Roy Moss

*CSDGKC Board Immediate Past
President
Superintendent
Grain Valley School District*

Dr. David McGehee

*CSDGKC Board Secretary/Treasurer
Superintendent
Lee's Summit School District*

Mr. Russell Fries

*CSDGKC Director
Board Member
Smithville School District*

Ms. Rhonda Gilstrap

*CSDGKC Director
Board Member
Blue Springs School District*

Dr. Allan Markley

*CSDGKC Director
Superintendent
Raytown School District*

CSDGKC LEADERSHIP

Dr. Gayden Carruth

*Executive Director
gcarruth@csdgkc.org*

Mr. Paul Shrout

*Director of Business Services
pshrout@csdgkc.org*

Ms. Liz Sedlock

*Executive Assistant
lsedlock@csdgkc.org*

3444 Broadway, Suite 401
Kansas City, MO 64111
816-753-7275 (phone)
816-756-5403 (fax)

www.csdgkc.org

Associate and Affiliate member lists reflect ongoing support

In addition to two Associate Members – Metropolitan Community College and the University of Central Missouri – CSDGKC counted 16 Affiliate Members this year:

ASSOCIATE MEMBERS

Metropolitan Community College
University of Central Missouri

AFFILIATE MEMBERS

Gold Membership
BlueCross BlueShield
of Kansas City
Guin Mundorf
Missouri EdCounsel

Silver Membership
Brightergy

Bronze Membership
Hollis + Miller Architects

Basic Membership
ACI Boland Architects
Alexander Open Systems
CBIZ
ING Financial Partners
k12itc
ParentisUSA
Patron Insight, Inc.
Piper Jaffray
School Specialty
Security Benefit
VALIC

Proud to serve member districts

CSDGKC takes pride in the fact that it serves districts large and small; rural, urban and suburban. Banding together provides a common voice that benefits all districts. Our current membership includes the following outstanding districts:

FULL MEMBERS OF CSDGKC, INC.

Adrian
Archie
Belton
Blue Springs
Center
Excelsior Springs
Fort Osage
Grain Valley
Grandview
Harrisonville
Hickman Mills
Independence
Kansas City
Kearney
Lathrop
Lee's Summit
Liberty
Lone Jack
North Kansas City
Oak Grove
Park Hill
Platte County
Pleasant Hill
Raymore-Peculiar
Raytown
Richmond
St. Joseph
Smithville
West Platte

PDN-ONLY MEMBERS

Académie Lafayette
Alta Vista
Barstow
Benjamin Banneker
Center Place Restoration
Chillicothe
Crossroads
Della Lamb
Genesis
Gordon Parks
Hogan Preparatory
Hope Leadership
Marillac East
Messiah Lutheran
Nativity of Mary
Norborne
Pembroke Hill
Plaza Heights Christian Academy
St. Therese
Scuola Vita Nuova

SIPGKC MEMBERS

Blue Springs
Grain Valley
Lone Jack
Smithville



Grant providing innovative, rigorous leadership training

Thanks to a grant of \$195,000 from the Edward F. Swinney Trust, Bank of America, N.A., Trustee – supplemented by additional funding from the Department of Elementary and Secondary Education (DESE) – 55 school leaders are currently taking part in the 26-day, 16-month Missouri Leaders for Excellence Achievement and Development (MoLEAD) program. CSDGKC is the fiscal agent for the grant.

Based on the National Institute for School Leadership (NISL) Executive Development curriculum – which is drawn from leadership research in the fields of business, medicine, military and education – the program is challenging participants to closely examine their current practices, and expand and stretch their thinking about leadership.

The 55 participants in the program are from Académie Lafayette, Alta Vista Charter Schools, Blue Springs, Genesis School, Grain Valley, Hope Leadership Academy, Kansas City, Kearney, Platte County and Raytown.